



Industrial
Automation

IMI Norgren



Product Line Guide for Industrial Automation



Find out more
imiplc.com/industrial-automation

1.800.514.0129
sales.usa@imiplc.com

Pneumatic Actuators

**A and EA Series**

Aluminum NFPA
1-1/2" - 12" Bores
Single and Double Acting

**J and EJ Series**

Steel NFPA
1-1/2" - 12" Bores
Single and Double Acting

**P-Series**

Aluminum NFPA
1-1/2" - 4" Bores
Double Acting,
Adaptive cushioning

**SS Series**

Stainless Steel NFPA
1-1/8" - 8" Bores
Double Acting

**N Series**

Non-Rotating NFPA
1-1/8" - 4" Bores
Double Acting

**LS Series Thrusters**

Linear Thruster with NFPA
cylinder
1-1/2" - 2" Bores
Composite and Roller Bearings

**TA Series Tiny Tim**

Small Bore NFPA
3/4", 1", 1-1/8" Bores
Single and Double Acting

**T Series Tiny Tim**

Small Bore Non-NFPA
3/4" & 1-1/8" Bores
Single and Double Acting

**RP Series Roundline Plus**

Round Body Disposable
5/16" - 3" Bores
Single and Double Acting

**RPD Series Delrin**

Delrin End Cap Roundline
9/16" - 2" Bores
Double Acting

**RT Series Thrusters**

Roundline Linear Thruster
9/16" - 3" Bores
Composite and Roller Bearings

**F-Series Plus**

Round, Compact cylinder
9/16" - 3" Bores
Single and Double Acting

**FPT Series**

F-Plus Twin Rod, Non-Rotating
3/4" - 2" Bores
Double Acting

**ISOLine™**

ISO 15552
32mm - 320mm Bores
Double Acting
Exposed Tie Rods or Profile Tube

**ISO 6432**

Round Body Disposable with
International dimensions
10mm - 25mm Bores
Double Acting

**C/146000**

Lintra® Plus
Rodless Cylinder
16mm - 80mm Bores
Internal, External, Roller Carriage

**Lintra® Lite**

A44000 Lintra® Lite
Rodless Cylinder
25mm - 40mm bores
Compact, lightweight design

**Rotary Actuators**

Rack & Pinion Rotary
1/2" - 2-1/2" Bores
Single and Double Rack,
Multi-Position

**90000 Series**

Anodized Aluminum
Extruded Body
12mm - 63mm Bores
Single and Double Acting

**PRA/882000, PRA/862000**

IVAC Cleanline PRA/882000
IVAC Industrial PRA/862000
32mm-100mm bores
Double Acting, cylinder/valve

**Baghouse Cylinder**

Steel or Aluminum NFPA cylinder with
externally mounted valve and electrical junction
box, among other optional components.
Customized for baghouse filtration systems in
power generation plants

**Reciprocating Air Motors**

Cylinder/valve combination with stroke
signal valves as ext. pilots. Used for
pumping media (lubrication, fiberglass,
foams, resins, hot melt glue, liquid
polymers, waste gases & liquids)

**Reed and Solid State Switches**

Magnetically operated,
non-contact sensing
LED, PNP, NPN
Flying leads or quick disconnect

**Unit-Air Assembly**

Cylinder/Valve combination unit
Typical Applications: Sorting systems,
conveyors, diverters, various industrial
applications

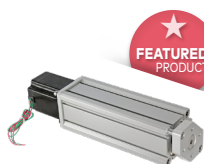
Electric Actuators



Norgren ELION Rod-style
32, 40, 50, 63, 80, 100mm bores
ISO 15552 ball screw
Stroke up to 59"
Thrust: up to 6,800 lbs.



Norgren ELION Rodless
48, 60, 80, 100mm bores
Toothbelt or ball screw
Stroke up to 18 feet
Belt Thrust: up to 337 lbs.
Screw Thrust: up to 2,282 lbs.



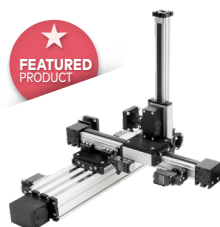
EFE/EFET Extruded Flat
16, 20, 25, 32, 40, 50mm bores
Stroke up to 5"
Thrust: up to 260 lbs.



EET Extruded Thruster
16, 20, 25, 32mm bores
Ideal for high side loading applications
Stroke up to 10"
Thrust: up to 248 lbs.



NPET Narrow Profile Table
20 & 32mm bores
Ideal for cartesian-type and pick & place applications
Stroke up to 8"
Thrust: up to 248 lbs.



Multi-Axis
2-axis, 3-axis and more
Highly configurable in any profile style and size combination
Extensive library of mountings and accessories



L Series
40mm – 100mm profile sizes
Compact design
Flexible mounting
Low maintenance



Q Series
60 – 125mm profile sizes
Suitable for clean room applications
Flexible mounting
High operational reliability



E Series
30mm – 125mm profile sizes
Long travel distances
High dynamics and speed capable
Most available configurations



D Series
120, 160, 200mm profile sizes
High-load bearing capacity
Internal guiding
High rigidity

Hydraulic Actuators



Medium Pressure
NFPA tie-rod for up to 1500 PSI
1-1/2" - 8" bores



High Pressure
NFPA tie-rod for up to 3000 PSI
1-1/2" - 8" bores

→ online configurators available for cylinders, valves, and FRLs:
norgren.com/en-us



Breakthrough engineering
for a better world

Directional Control Valves

**V5x**

Inline Solenoid & Air Pilot
Port: 1/8", 1/4", 3/8" & 1/2"
Function: 3/2, 5/2 & 5/3
Cv: 0.48 to 2.48
Voltage: 12 VDC, 24 VDC,
110/120 VAC, 220 VAC

**V6x**

Inline Solenoid & Air Pilot
Port: 1/8", 1/4" & 3/8"
Function: 3/2, 2x3/2, 5/2 & 5/3
Cv: 0.75 to 2.6
Voltage: 12 VDC, 24 VDC,
110/120 VAC, 220 VAC

**Nugget 200**

Inline Solenoid & Air Pilot
Port: 1/4", 3/8" & 1/2"
Function: 3/2, 5/2 & 5/3
Cv: 1.67
Voltage: 12 VDC, 24 VDC,
110/120 VAC, 220 VAC

**Nugget 500**

Inline Solenoid & Air Pilot
Port: 1/2" & 3/4"
Function: 5/2 & 5/3
Cv: 4.0 to 5.6
Voltage: 12 VDC, 24 VDC,
110/120 VAC, 220 VAC

**Poppet**

Inline, Solenoid & Air Pilot
Port: 1/4", 3/8", 1/2", 3/4", 1",
1-1/4", 1-1/2" & 2"
Function: 2/2, 3/2 & 4/2
Cv: 1.2 to 49.5
Voltage: 12 VDC, 24 VDC,
110/120 VAC, 220 VAC

**Miniature Manual valves**

Port: 10-32(F), 1/8" NPT/ 10-32
(F), 1/8" (F) NPT
Cv: 0.2 to 0.54
Function: 2/2NC, 3/2NC & 5/2

**Super X**

Inline Manual & Mechanical
Port: 1/8" & 1/4"
Function: 3/2, 5/2 & 5/3
Cv: 0.34 to 0.98

**Nugget 200**

Inline Manual & Mechanical
Port: 1/4", 3/8" & 1/2"
Function: 3/2, 5/2 & 5/3
Cv: 1.67

**VHLA**

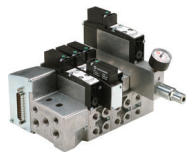
Inline Manual & Mechanical
Port: 1/4", 3/8" to 1/2"
Function: 4/2 & 4/3
Cv: 0.4 to 3.1

**C00**

Inline Lockout
Port: 3/8", 1/2", 3/4",
1", 1-1/4" & 1-1/2"
Function: 3/2
Cv: 4.2 to 22.4

**VR10 & VR15**

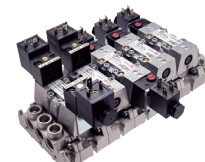
Manifold Mounted
Port: PIF (5/32", 1/4", 5/16",
4mm, 6mm & 8mm)
Function: 2x3/2, 5/2 & 5/3
Cv: 0.22 to 0.60
Voltage: Wireway 24Vdc
Connectivity: Multipole,
EtherNet/IP, PROFINET,
EtherCAT, IO-Link, CANopen

**VS18 & VS26**

Manifold Mounted
Port: 1/8", 3/8", 1/4"PIF &
3/8"PIF
Function: 2x3/2, 5/2 & 5/3
Cv: 0.56 to 1.37
Voltage: 12 VDC, 24 VDC,
110/120 VAC wireway
Connectivity: Multipole,
DeviceNet, EtherNet/IP, Profibus,
PROFINET, IO-Link, CANopen

**Mini ISO**

Subbase Manifold
Port: 1/8", 1/4" & PIF (1/4" & 3/8")
Function: 2x3/2, 5/2 & 5/3
Cv: 0.58 to 1.22
Voltage: 12 VDC, 24 VDC,
110/120 VAC, 220 VAC

**ISO Size, 1, 2 & 3**

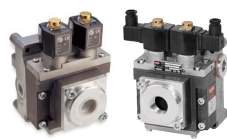
Subbase Manifold
Port: 1/4", 3/8" & 1/2"
Function: 5/2 & 5/3
Cv: 1.2 to 4.4
Voltage: 12 VDC, 24 VDC,
110/120 VAC, 220 VAC

**VM10**

Stacking
Port: PIF (1/8", 1/4", 5/32")
Function: 2x3/2, 5/2 & 5/3
Cv: up to 0.44
Voltage: Wireway
(12 VDC & 24 VDC)
Connectivity: Multipole,
DeviceNet, EtherNet/IP,
Profibus, PROFINET, CANopen

**VP Series
Proportional Valves**

Inline or Manifold
Port: 1/8" or 1/4"
Function: 3/2 Proportional
Flow: 6 to 60 SCFM or
Cv: 0.2 to 1.4
Control: 0 - 10V or 4 to 20 mA
/ open or closed loop
Outlet Pressure Control:
0 to 145 psi

**Press Safety**

Inline
Port: 1/4", 1/2", 3/4", 1" & 1-1/2"
Function: 3/2 with Dynamic
monitoring
Flow: Cv 2.6 to 62.4
12Vdc, 24 VDC, 110/120 VAC,
220 VAC
Voltage: 24 VDC & 110/120 VAC

**Energy**

Inline or Manifold
Port: 1/8" upto 1-1/2"
Function: 3/2, 5/2, 5/3
Materials: Stainless Steel,
Brass and AL
Certifications:
CSA, FM, UL, SIL and Tuv
Chemical, Refining,
Power Plants, Oil & Gas

**Commercial Vehicle**

Inline or Manifold
Port: 1/8, 1/4" & 1/2"
Function: 3/2, 5/2, 5/3
Materials: Composite,
Stainless Steel, Brass and AL
Control: Air, Electrical or
Manual/Mechanical
Chassis Cab, Bus & Trailer

**Two-hand Anti-
Tiedown Control Valve**

Two-hand anti-tiedown control
valve. Models that actuate any
3 or 4-way air piloted, spring
return power valve or small
single-acting cylinders or 4-way
power valve for direct actuation
of single or double acting air
cylinders.

Fluid Control Valves



82520 & 84620 Series

2-way Solenoid Valves - Direct Lift Seat
Port: 1/8", 1/4", 3/8"
Pressure: 0 - 580 psi
Cv: 0.08 up to 0.58
Seat Materials: NBR
Materials: Brass & 316SS



82630 & 82570 Series

2-way Solenoid Valves - Direct Lift Diaphragm
Port: 1/4", 3/8" & 1/2"
Pressure: 0 - 145 psi
Cv: 1.7 to 2
Seat Materials: NBR
Materials: Brass & 316SS



82640 & 84490 Series

2-way Solenoid Valves - Direct Lift Diaphragm
Port: 1/4", 3/8", 1/2", 3/4", 1", 1-1/4", 1 1/2" & 2"
Pressure: 0 - 232 psi
Cv: 2.2 to 47.2
Seat Materials: NBR & NBR-K
Materials: Brass & 316SS



82410 & 82740 Series

2-way Solenoid Valves - Indirect Diaphragm
Port: 1/4", 3/8", 1/2", 3/4", 1", 1-1/4", 1 1/2" & 2"
Pressure: 0 - 232 psi
Cv: 2.2 to 47.2
Seat Materials: NBR & HBNR
Materials: Brass & 316SS
UL and CSA certified versions available



85710 & 85750 Series

2-way Solenoid Valves - Direct Lift Piston Seat
Port: 1/4", 3/8", 1/2", 3/4", 1", 1-1/4", 1 1/2" & 2"
Pressure: 0 - 580 psi
Cv: 2.5 to 49.5
Seat Materials: NBR-K
Materials: Brass & 316SS
UL and CSA certified versions available



84380 & 84390 Series

2-way Piston Seat Valves - Pressure Actuated
Port: 1/8", 1/4", 3/8"
Pressure: 0 - 363 psi
Cv: 0.14 to 2
Seat Materials: PTFE
Materials: Brass & 316SS



82190, 82290, 82390 & 82490 Series

2-way Angle Seat Valves - Pressure Actuated
Port: 1/8", 1/4", 3/8" & 1/2"
Pressure: 0 - 232 psi
Cv: 5.5 to 61
Seat Materials: NBR
Materials: Brass & 316SS



84510 & 84530 Series

2-way Angle Seat Valves - Pressure Actuated
Port: 1/2", 3/4", 1", 1-1/4", 1 1/2" & 2"
Pressure: 0 - 290 psi
Cv: 5.5 to 42.6
Seat Materials: PTFE
Materials: Brass & 316SS



84730 & 84750 Series

2-way Angle Seat Valves - Pressure Actuated
Port: 1/2", 3/4", 1", 1-1/4", 1 1/2" & 2"
Pressure: 0 - 232 psi
Cv: 5.5 to 16.1
Seat Materials: NBR
Materials: Brass & 316SS

Solenoid Valves



KIP Series 1

2 and 3-way Solenoid Valves
Maximum MOPD (psi): 800
Cv: up to 0.305
Power Rating: 6 watts
Ports: 10-32 UNF, 1/8"
Certifications CSA & UL



KIP Series 2

2 and 3-way Solenoid Valves
Maximum MOPD (psi): 1000
Cv: up to 0.305
Power Rating: 7 watts
Ports: 10-32 UNF, 1/8"
Certifications CSA & UL



KIP Series 3

2 and 3-way Solenoid Valves
Maximum MOPD (psi): 1000
Cv: up to 0.490
Power Rating: 7 watts
Ports: 10-32 UNF, 1/8", 1/4"
Certifications CSA & UL



KIP Series 6

2 and 3-way Solenoid Valves
Maximum MOPD (psi): 1200
Cv: up to 0.610
Power Rating: 10 watts
Ports: 10-32 UNF, 1/8", 1/4", 3/8"
Certifications CSA & UL



KIP Q2 Series

2-way Quick-Connect Valves
Maximum MOPD (psi): 120
Cv: up to 1
Power Rating: 10 watts
Port: 1/4" PIF & 3/8" PIF
Certifications CSA, UL & NSF



Miniature Solenoids

Inline, Manifold & Proportional
Body Width: 8mm, 10mm, 15mm, 22mm & 32mm
Function: 2/2, 3/2
Power: 0.5 watts up to 10 watts

→ online configurators available for cylinders, valves, and FRLs:
norgren.com/en-us



Excelon® Plus Series



Excelon® Plus BL82 & BL84 – Filter/Regulator – Lubricator boxed sets

1/4", 3/8", 1/2", 3/4" (PTF/ISO G)
Polycarbonate bowl: 145 psi
82 Series Metal bowl: 246 psi
84 Series Metal bowl: 290 psi
Polycarbonate bowl:
+14°F to +140°F
Metal bowl: -4°F to +149°F



Excelon® Plus B82G & B84G – Filter/Regulators

1/4", 3/8", 1/2", 3/4" (PTF/ISO G)
Polycarbonate bowl: 145 psi
82 Series Metal bowl: 246 psi
84 Series Metal bowl: 290 psi
Polycarbonate bowl:
+14°F to +140°F
Metal bowl: -4°F to +149°F
Integrated Electronic Pressure Sensor option



Excelon® Plus F82G & F84G – General Purpose Filters

1/4", 3/8", 1/2", 3/4" (PTF/ISO G)
Polycarbonate bowl: 145 psi
82 Series Metal bowl: 246 psi
84 Series Metal bowl: 290 psi
Polycarbonate bowl:
+14°F to +140°F
Metal bowl: -4°F to +149°F



Excelon® Plus F82C & F84C – Coalescing Filters

1/4", 3/8", 1/2", 3/4" (PTF/ISO G)
Polycarbonate bowl: 145 psi
82 Series Metal bowl: 246 psi
84 Series Metal bowl: 290 psi
Polycarbonate bowl:
+14°F to +140°F
Metal bowl: -4 to +149°F



Excelon® Plus F82V & F84V – Vapor Removal Filters

1/4", 3/8", 1/2", 3/4" (PTF/ISO G)
Polycarbonate bowl: 145 psi
82 Series Metal bowl: 246 psi
84 Series Metal bowl: 290 psi
-4°F to +149°F



Excelon® Plus R82G & R84G – Pressure Regulators

1/4", 3/8", 1/2", 3/4" (PTF/ISO G)
Inlet: 290 psi
-4°F to +149°F
Adjustable ranges: 4 to 58 psi,
4 to 145 psi, 10 to 247 psi
Integrated Electronic Pressure Sensor option



Excelon® Plus L82M/C & L84M/C – Oil Fog and Micro Fog Lubricators

1/4", 3/8", 1/2", 3/4" (PTF/ISO G)
Polycarbonate bowl: 145 psi
82 Series Metal bowl: 246 psi
84 Series Metal bowl: 290 psi
Polycarbonate bowl: +14°F to +140°F
Metal bowl: -4°F to +149°F



Excelon® Plus T82T & T84T – Shut off Valves

1/4", 3/8", 1/2", 3/4" (PTF/ISO G)
82 Series: 246 psi
84 Series: 290 psi
-4°F to +149°F



Excelon® Plus P84F & P84C Soft Start/Dump Valves

3/8", 1/2", 3/4" (PTF/ISO G)
145 psi (10 bar)
-4°F to 149°F



Excelon® Plus Q84G – Standalone Electronic Pressure Sensor

3/8", 1/2", 3/4" (PTF/ISO G)
0 to 145 psi
-4°F to +149°F
IO-Link Connectivity

Excelon® Plus TR Series



Excelon® Plus TR Series HBL82 & HBL84 Filter/Regulator/Lubricator combination units

For for harsh environments and extreme temperatures.
3/8", 1/2", 3/4" (PTF/ISO G)
Max Inlet Pressure: 290 psi
Temp Range: -4°F to +149°F*



Excelon® Plus TR Series HB82G & HB84G Filter/Regulators

For for harsh environments and extreme temperatures.
3/8", 1/2", 3/4" (PTF/ISO G)
Max Inlet Pressure: 290 psi
Temp Range: -40°F to +176°F*



Excelon® Plus TR Series HF82G & HF84G General Purpose Filters

For for harsh environments and extreme temperatures.
3/8", 1/2", 3/4" (PTF/ISO G)
Max Inlet Pressure: 290 psi
Temp Range: -40°F to +176°F



Excelon® Plus TR Series HF82C & HF84C Coalescing Filters

For for harsh environments and extreme temperatures.
3/8", 1/2", 3/4" (PTF/ISO G)
Max Inlet Pressure: 290 psi
Temp Range: -40°F to +176°F



Excelon® Plus TR Series HF82V & HF84V Vapor Removal Filters

For for harsh environments and extreme temperatures.
3/8", 1/2", 3/4" (PTF/ISO G)
Max Inlet Pressure: 290 psi
Temp Range: -40°F to +176°F



Excelon® Plus TR Series HR82G & HR84G Pressure Regulators

For for harsh environments and extreme temperatures.
3/8", 1/2", 3/4" (PTF/ISO G)
Adjustable ranges: 5 to 58 psi, 5 to 145 psi, 10 to 247 psi
Max Inlet Pressure: 290 psi
Temp Range: -40°F to +176°F*



Excelon® Plus TR Series HL82M/C & HL84M/C Oil Fog and Micro Fog Lubricators

For for harsh environments and extreme temperatures.
3/8", 1/2", 3/4" (PTF/ISO G)
Max Inlet Pressure: 290 psi
Temp Range: -29°F to +176°F



Excelon® Plus TR Series HT82T & HT84T Shutoff Valve

For for harsh environments and extreme temperatures.
3/8", 1/2", 3/4" (PTF/ISO G)
Max Inlet Pressure: 290 psi
Temp Range: -4°F to +176°F

* See datasheet

Ported Inline F, R, L's



P8A
Filter-Regulator-
Lubricator
3/4" to 1-1/2"
250 psig
0°F to 175°F



P8H
Filter/
Regulator-
Lubricator
3/4" to 1-1/2"
250 psig
0°F to 175°F



B17
3/4" – 1-1/2"
250psig
-30°F to 175°F



F17 and F18
General purpose filter
3/4" to 1-1/2"
250 psig
-30°F to 175°F



F46 and F47
Oil removal filter
3/4", 1", 1-1/4"
250 psig
-30°F to 150°F



R17, R18
General purpose
regulator
3/4" to 2"
450 psig, 300 psig (R17)
-30°F to 175°F*



L17
Lubricator
Oil Fog or Micro-
fog®
3/4" to 1-1/2"
250 psig
0°F to 175°F

Miniature Series



Series PTH
Filter/Regulator-
Lubricator
1/8" - 1/4"
250 psig*
0°F to 150°F*



B07, B39
Filter/Regulators
1/8", 1/4"
250 psig*
-30°F to 150°F*



F07
General purpose
filter
1/8", 1/4"
250 psig*
-30°F to 175°F*



F39
Oil removal filter
1/8", 1/4"
250 psig*
-30°F to 150°F*



R07, R46
General purpose
regulator
1/8", 1/4"
300 psig*
-30°F to 150°F*



L07
Micro-fog®
lubricator
1/8", 1/4"
250 psig*
0°F to 175°F*



V07
Miniature pressure
relief valve
1/8", 1/4"
300 psig
-30°F to 150°F

Pressure, Micro-Trol, Instrument Regulators, Pilot and Feedback Regulators



11-002 & 20AG
Pressure regulator
1/4", 3/8", 1/2"
G3/4, G1
400 psig
-30°F to 175°F*



R24
Micro-Trol
pressure regulator
1/4" to 1-1/4"
300 psig
0°F to 150°F



11-018
Precision regulator
1/4"
200 psig*
32°F to 160°F



**R40, R41,
11-400, 11-104**
Pilot Feedback, feedback
1/4"
360 to 450 psig*
0°F to 175°F



**11-042, 11-008,
R18, R24**
Pilot operated regulator
1/4" to 2"
300 to 450 psig*
0°F to 175°F

Stainless Steel Products



**Maxseal
IFR3 & IFR4**
Filter/regulator
1/4" and 1/2"
290 psig
-22°F to 194°F



B38
General purpose
filter/regulator
1/4", 1/2" PTF
450 psig*
-40°F to 175°F



F22, R22, L22
Filter, pressure regulator,
lubricator
1/2" NPTF
290 psig*
0°F to 175°F



F05
General purpose filter
1/4" PTF
300 psig
-13°F to 175°F



R05, B05
General purpose
regulator & filter/regulator
1/4" PTF
300 psig
-13°F to 175°F*



* See datasheet

Regulators

**R06**

Brass miniature
1/8", 1/4"
400 psig
-30°F to 150°F*

R14, R16

Miniature, preset,
nonadjustable
1/8", 1/4"
400 psig
-30°F to 175°F*

11-044

Pressure regulator
1/4" tube connecton
250 psig
-30°F to 150°F*

R91

Pressure regulator
1/4"
150 psig
0°F to 125°F*
NSF approved R91W

R43, 11-009

Water regulator
1/4" to 1"
400 psig
-30°F to 200°F

Excelon® Series

**Excelon® B72G, B73G, B74G Filter/Regulator**

1/4" to 3/4"
250 psig*
-30°F to 175°F*

Excelon® F72, F73, F74 Series

General purpose filters, oil
removal, oil vapor, and filter/
regulators. 1/4" to 3/4", 250 psig*
-30°F to 175°F*

Excelon® R72G, R73G, R74G

1/4" to 3/4"
300 psig
-30°F to 175°F*

Excelon® L72M/C, L73M/C, L74M/C

1/4" to 1/2"
250 psig*
-30°F to 175°F*

Excelon® V72G, V74G

1/4" to 3/4"
300 psig
-30°F to 175°F*

Excelon® T72, T73, and T74

Shut off valves
1/4" to 3/4", 250 psig
-30°F to 150°F

Olympian® Plus Modular System

**B68E/G**

Filter/Regulator
1/2" to 1-1/2"
250 psig
0°F to 175°F*

F68 Series

General purpose filters,
oil removal, oil vapor,
and filter/regulators
1/2" to 1-1/2", 250 psig
0°F to 175°F*

R68G

General
purpose
1/2" to 1-1/2"
300 psig
0°F to 175°F

L68M/C

1/2" to 1-1/2"
250 psig
0°F to 175°F*

V68H

1/2" to 1-1/2"
300 psig*
0°F to 175°F*

P68 and T68

Smooth start/
exhaust, & Lockout
3/4" to 1-1/2"
250 psig
0°F to 175°F

* See datasheet

Fittings



Pneufit®

Nickel Plated Brass
Inch - 1/8" to 1/2" O/D tube
Metric - 4 to 12mm O/D tube
Vacuum to 260 psi



Pneufit® C & M

Composite
Inch - 1/8" to 1/2" O/D tube
Metric - 3 to 16mm O/D tube
Vacuum to 150 psi



Pneufit® D

NSF 51 / 61 Acetal
Inch - 5/32" to 1/2" O/D tube
Vacuum to 230 psi



Barb Fittings

Nickel Plated Brass
Inch - 1/16" to 3/8" I/D tube

Function Fittings and Flow Control



Pneufit® Push-in Elbow Banjos

1/4" to 3/8", 4 to 12mm



Flow Controls

5/32" to 1/2", 4 to 16 mm



T1000 Series

Block form controls
1/8" to 1/2" NPT or ISO G



Pneufit® C Inline Flow Control

5/32" to 1/2", 4 to 12 mm



M/800, C/800 Series

Heavy duty flow controls - unidirectional
1/8" to 1"



T55/56 Series

Non-return Valves
1/8", 1/4", 3/8", 1/2"
NPT and ISO G



Air fuses

In-line excess flow shut-off valves
1/4" to 1-1/2"



T65 Series

Shuttle valves
1/8", 1/4", NPT and ISO G



T70 Series

Quick exhaust valves
1/8" to 1/2"

Pneumatic Accessories



Pressure Sensor

Fitting
5/32", 4 mm

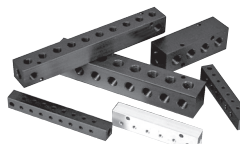


Mufflers & Silencers

Bronze, Aluminum, and Plastic
10-32 to 1-1/2" NPT



Tubing, cutters, mounts, markers



Manifolds

Available in a variety of port sizes, configurations, and materials including aluminum, brass, stainless steel, polypropylene, and nylon materials.

→ online configurators available for cylinders, valves, and FRLs:
norgren.com/en-us



Breakthrough engineering
for a better world

Vacuum Generators



NVP Series

Modular Venturi Generators
Vacuum levels up to 29.5"Hg
Vacuum flows up to 28.0 SCFM



NJ Series

Rugged Cylindrical Generators
Vacuum levels up to 28.0"Hg
Vacuum flows up to 28.0 SCFM



NVDF Series

Variable Flow Vacuum Generators
Vacuum levels up to 25.0"Hg
Vacuum flows up to 120.0 SCFM



NCDF Series

Adjustable Air Amplifier/Blowers
Vacuum levels up to 9.0"Hg
Vacuum flows up to 330.0 SCFM



NDF Series

Material Transfer Generators
Vacuum levels up to 11.0"Hg
Vacuum flows up to 600.0 SCF

Vacuum Cups



Vacuum Cups

A wide range of styles, materials, and sizes

End-of-Arm-Tooling & Accessories



NCRVT

Fully integrated vacuum tool designed for collaborative robots



Spring Levelers

Mechanical compensation for uneven surfaces



Mounting Brackets

To connect spring levelers and accessories to extrusions



Manifold Blocks

For mounting vacuum cups to extrusions and/or distributing vacuum to multiple locations

Switches and Sensors



18D Pressure Switch

Pneumatic/Hydraulic
Vac - 435 psi
70 to 6100 psi
1/4" NPT
7/16 - 20 UNF



51D Solid State Switch

Pneumatic/all-fluid
14.5 to 145 psi
1/8" NPT



PTN Analog Pressure Transducer

316 Stainless steel housing,
wetted components
1/4" NPT
-4°F to 257°F



34D Pressure Sensor

For neutral and aggressive
gaseous and liquid fluids
Stainless steel wetted
components
-14.5 to 8,702 psi
IO-Link Connectivity



54D Pressure Sensor

Compact, robust, and light
weight sensor for compressed
air applications
-14.5 to 232 psi
IO-Link Connectivity

Industrial Communication



IO-Link Masters & I/O Modules

Gateways for connecting
devices to Profinet and
Ethernet/IP



→ online configurators available for cylinders, valves, and FRLs:
norgren.com/en-us

Warning

Improper selection, misuse, age or malfunction of components used in systems can cause failure in various modes. The system designer is warned to consider the failure modes of all component parts and to provide adequate safeguards to prevent personal injury or damage to equipment or property in the event of such failure modes. System designers and end users are cautioned to consult instruction sheets and specifications available from the factory. The system designer/end user is responsible for verifying that all requirements for the application are met.

Warranty

The products described herein are warranted subject to seller's Standard Terms and Condition of Sale, available at seller's website.

WARNING: Cancer and Reproductive Harm -
www.p65warnings.ca.gov.

Our Industrial Automation sector operates four global centers of technical excellence and a sales and service network in 50 countries, as well as manufacturing capability in Europe, Americas and Asia Pacific.

Supported by distributors worldwide.

For further information, scan this QR code or visit:

www.imiplc.com/industrial-automation



Industrial Automation

Our product brands:

IMI Norgren

IMI Bimba

IMI Bahr

The information in this brochure is provided for informational and promotional purposes only and is provided "as is" and without warranties of any kind, whether express or implied, including but not limited to implied warranties of satisfactory quality, fitness for a particular purpose and/ or correctness.

Any specifications, features, pricing, or availability contained in this brochure are subject to change without prior notice. IMI plc does not represent or warrant that the information and/or specification in this brochure are accurate, complete, or current and therefore make no warranties or representation regarding the use of the content. IMI plc or one of its subsidiaries own all images, logos, product brands, and trademarks mentioned in this brochure. Unauthorized use, reproductions, or modification of this content is prohibited.

© Copyright IMI plc. All rights reserved.

Z8992BR
updated 09/24

