



Product Line Guide

for Industrial Automation



Find out more
bimba.com/en

1.800.442.4622
cs@bimba.com

Roundline Actuators

**Original Line Series**

Non-repairable stainless steel body
12 Bore Sizes from 5/16" - 3"

**Original Line with Adjustable Cushions**

Protection against kinetic energy 3/4" - 3" bores

**Original Line MRS**

Magnetic piston standard
9/16" - 2-1/2" bores

**Original Line All Stainless Steel**

Stainless steel body and end caps
Food grade grease
5/16" - 3" bores

**Original Line Non-Rotating**

Square rod design
9/16" - 2-1/2" bores

**Original Line PC Series**

Delrin end caps
9/16" - 2" bores

**Original Line Z-Line**

Heavy duty roundline
3/4" - 2" bores

**Original Line Rod Lock**

Built-in mechanical lock
3/4" - 3" bores

**Original Line Three Position**

Single cylinder with 3 distinct positions
9/16" - 2" bores

**Hole Punch Cylinder**

1-4"-5/8" diameter cutter and non-cutter options available

**Double-Wall**

NFPA interchangeable cylinder with an epoxy coated outer body
1-1/2" - 4" bores

**Repairable Stainless Steel Design**

Food grade grease and secondary wiper
1-1/2" - 8" bores

**Position Feedback**

Internal transducer for feedback or control
1-1/16" - 3" bores

**Centaur**

Repairable roundline
1-1/4" - 3" bores

**Single Acting Air Clamps**

Gripping power on extend stroke and spring retract
15 different models

Compact Actuators

**Flat-1**

8 bore sizes from 9/16" - 4" bores

**Square Flat-1**

Horizontal and side mounting
3/4" - 4" bores

**Flat-II**

Non-rotating twin rod
3/4" - 2" bores

**Square Flat-II**

Horizontal and side mounting with non-rotating Twin Rod
3/4" - 2" bores

**Flat-1 Multiple Power**

Available in 2, 3 and 4 stage force multiplier
2-1/2", 3" and 4" bores

**Flat-1 Multiple Position**

Compact with three distinct positions
9/16" - 4" bores

**Stainless Steel Flat-1**

Corrosion resistant, IP69K rated
9/16" - 4" bores

**Stopper Cylinder**

Made to withstand side impact loading
32mm bore

**Twist Clamp**

Combination rotary and linear motion
23mm - 63mm bores

**Diaphragm Cylinder**

Extremely compact (0.56"), ideal for clamping
1-1/4" bore



online configurators available for cylinders, valves, and FRLs:
bimba.com/en



Extruded Flat-1 (EF-1)

Extruded body with interchangeable dimensions
12mm - 100mm bores



Extruded Flat-2 (EF-2)

Guided and non-rotating extruded body
12mm - 100mm bores



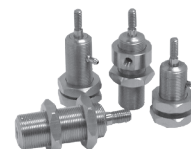
Extruded Flat Lift Table

Four guide shafts for supporting vertical lifting
50mm, 80mm, 100mm bores



EFP/EFQ

Multi-position and multi-power extruded body designs
12mm - 100mm bores



Miniature Air Cylinders

MF and MA series for extremely tight spaces
1/4", 3/8", and 1/2" bores



Twin Bore

Basic, double end rod and air table styles available
6mm - 32mm bores



Narrow Profile Air Table

Single bore air table with precise load guiding
12mm, 20mm, 32mm bores



Space Saver

Unique compact design
3/4" - 4" bores

NFPA Actuators



PA Series

NFPA interchangeable, cost effective
1-1/2" - 4" bores



Standard Aluminum (TA Series)

Aluminum body NFPA interchangeable
1-1/2" - 12" bores



Flush Mount (FM Series)

Aluminum body NFPA interchangeable design with sleeve nut constructions
1-1/2" - 8" bores



Stainless Steel (SS Series)

Heavy duty stainless steel cylinders interchangeable design
1-1/2" - 8" bores



Triple Rod (TRA Series)

Triple rod for non-rotating design
1-1/2" - 8" bores



TAS Series

Steel body NFPA interchangeable design
1-1/2" - 8" bores



Multi-Stage

Multiple pistons used to increase force
1-1/2" - 8" bores



Tough Duty (TD Series)

Heavy duty aluminum body NFPA interchangeable design
1-1/2" - 8" bores



Back to Back

Two cylinders combined into one unit
1-1/2" - 8" bores



FM with Rod Lock

Aluminum body design with 100% ball bearing rod lock
1-1/2" - 6" bores



Three Position

Single cylinder unit with 3 distinct positions
1-1/2" - 8" bores



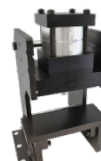
Position Feedback

Offers continuous position sensing
1-1/2" - 6" bores



Stainless Steel Multi-Stage

Multiple piston design in a stainless steel body
1-1/2" - 8" bores



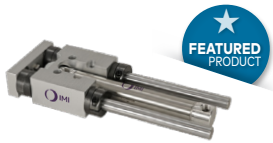
Bench Top Press

Heavy duty steel keyed and bolted construction
5" bores

Find out more



Guided Actuators



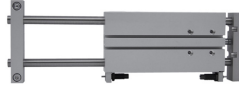
TE Series Thruster

Composite bearings
for high loads
9/16" - 3" bores



T Series Thruster

Ball bearings for high precision
9/16" - 3" bores



ET Series Thruster

Extruded body, compact profile
12mm - 32mm bores



PneuMoment®

Heavy moment loading
capability
1-1/16" - 2-1/2" bores



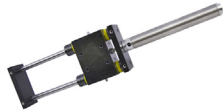
Multiple Position Thruster

3 positions in composite
or ball bearing options
9/16" - 2" bores



4 Shaft T Series

Higher load ball bearing thruster
2", 2-1/2", 3" bores



Movable Housing Thruster

Composite or ball bearing options
9/16" - 3" bores

Rodless Actuators



Ultran Rodless

Magnetically coupled
5/16" - 2" bores



Ultran Rodless Slide

Magnetically coupled
with built in guide
5/16" - 2" bores



Ultran High Load Slide

High moment load capability
1-1/16", 1-1/4", & 1-1/2" bores



Ultran Band

Mechanically coupled
18mm - 63mm bores

Rotary Actuators



Pneu-Turn

Rack and pinion, single and
double rack configurations
9/16" - 2" bores



Pneu-Turn 3 Position

Three distinct rotation positions,
single and double
rack configurations
9/16" - 2" bores



Position Feedback Pneu-Turn

Transducer installed for
feedback or control
1-1/2" - 2" bores

ISO Actuators



ISO 15552

Extruded body conforms
to ISO 15552 standards
32mm - 125mm bores



ISO 6432

Roundline cylinder conforms
to ISO 6432 standards
10mm - 25mm bores



online configurators available for cylinders, valves, and FRLs:
bimba.com/en

Hydraulic Actuators



Medium Pressure (MH Series)

NFPA tie-rod for up to 1500 PSI
1-1/2" - 8" bores

High Pressure (HH Series)

NFPA tie-rod for up to 3000 PSI
1-1/2" - 8" bores

Original Line 500 Series

Replaceable rod stud - 500 PSI

Original Line "HL" Option

With 'HL' option - 250 PSI
5/16" - 3" bores

Standard Aluminum "TA" & "FM"

with 'TH' option - 400 PSI
1-1/2" - 12" bores



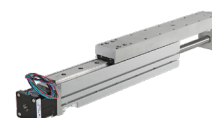
Compact Medium Pressure (CMH Series)

Compact medium pressure
hydraulic up to 2030 PSI
25mm - 101mm bores

Compact High Pressure (CHH Series)

Compact high pressure
hydraulic up to 3000 PSI
25mm - 76mm bores

Electric Actuators



Norgren ELION Rod-style

32, 40, 50, 63, 80, 100mm bores
ISO 15552 ball screw
Stroke up to 59"
Thrust: up to 6,800 lbs.

Norgren ELION Rodless

48, 60, 80, 100mm bores
Toothbelt or ball screw
Stroke up to 18 feet
Belt Thrust: up to 337 lbs.
Screw Thrust: up to 2,282 lbs.

EFE/EFET Extruded Flat

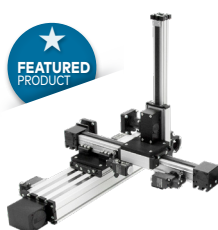
16, 20, 25, 32, 40, 50mm bores
Stroke up to 5"
Thrust: up to 260 lbs.

EET Extruded Thruster

16, 20, 25, 32mm bores
Ideal for high side loading applications
Stroke up to 10"
Thrust: up to 248 lbs.

NPET Narrow Profile Table

20 & 32mm bores
Ideal for cartesian-type and pick & place applications
Stroke up to 8"
Thrust: up to 248 lbs.



Multi-Axis

2-axis, 3-axis and more
Highly configurable in any profile style and size combination
Extensive library of mountings and accessories

L Series

40mm - 100mm profile sizes
Compact design
Flexible mounting
Low maintenance

Q Series

60 - 125mm profile sizes
Suitable for clean room applications
Flexible mounting
High operational reliability

E Series

30mm - 125mm profile sizes
Long travel distances
High dynamics and speed capable
Most available configurations

D Series

120, 160, 200mm profile sizes
High-load bearing capacity
Internal guiding
High rigidity

Find out more

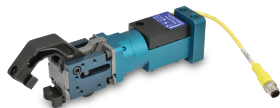


Grippers



BPGS Series

Pneumatic gripper system
Gripping forces up to 450 lbs. at 80 PSI



BPGS Hot Metal Gripper

Pneumatic gripper system - high temperature
Gripping forces up to 450 lbs. at 80 PSI
Max. operating temperature: 1650°F

Switches



Band Mounted

Edge detection
10-28 VDC, 50mA rating



Track Mounted

Edge detection
10-28 VDC, 50mA rating



Tie-Roded Mounted

Models available for cylinders with a 5" bore size or greater
For use with Original Line, Pneu-Turn, Guided Thrusters, Double-Wall, RS cylinders



Digital Pressure

(2) individually programmed sinking (NPN) or sourcing (PNP) digital outputs
(1) 1-5V or 4-20mA analog output
optional IP65 enclosure protection

Sensors



Threaded Proximity Sensors

End of stroke switches compatible with Ultrac® rodless cylinders



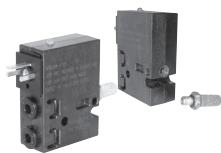
BPT Pressure Transducer

Pressure ranges from vacuum to 5,000 PSI
IP67 stainless steel housing
Accuracy 0.4% FS, BFSL



online configurators available for cylinders, valves, and FRLs:
bimba.com/en

Directional Control Valves



Isonic® V1000

Port: PIF 5/32", 1/4"
Function: 2/2, 3/2
Cv: 0.01 to 0.05
Voltage: 12, 24 VDC, 24, 120 VAC



Nova

Inline solenoid and air pilot
Port: 1/8" and 1/4"
Function: 4/2
Cv: 0.07 to 1.0
Voltage: 12, 24 VDC, 24, 120, 220, 240 VAC



Capsula

Sub-base manifold
Port: 1/4" and 1/2"
Function: 2/2, 3/2, 5/2, 5/3
Cv: 0.07 to 3.17
Voltage: 12, 24 VDC, 24, 120, 220, 240 VAC



Dura-Matic

Pressure and bleed valve
Port: 1/4" and 1/8"
Operating pressure:
20 - 150 PSI



Miniature Manual

Port: 10-32 UNF (F), 1/8" NPT/
10-32 UNF (F), 1/8" (F) NPT
Function: 2/2, 3/2, 5/2
Cv: 0.2 to 0.54

Specialty Valves



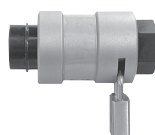
CSV

Two-hand anti-tiedown controls
Port: 1/8", PIF 1/4", 1/8"
Cv: 0.11 to 1.00



LTV

Low stress valves
Port: 1/8"
Function: 5/2
Cv: 0.24



SLV

Slide/lockout valves
Port: 1/4", 3/8", 1/2"
Function:
Cv: 0.94 to 3.18



MHL

Rotary hand valve
Port: 1/8"
Function: 4/2, 4/3
Cv: 0.14



Dyna-Coil

Mini solenoid valves
Port: 1/4", 3/8", 1/2"
Function: 2/2, 3/2
Cv: 0.94 to 3.18
Voltage: 12, 24 VDC,
24, 120, 240 VAC



ACV

Dash/panel mount PTO
control valve
Port: 5/32", 1/4"
Cv: 0.053 to 0.12
Voltage: 12, 24VDC



Pneumatic Isolation Valve (PIV)

OSHA required lockout/tagout
Port: 1/4"-1-1/2"
Cv: 2.0 to 54.0



BPV Series

Pneumatic pinch valve
Supports tubing from
0.125" - 0.500"



600/900 Series

Pneumatic pinch valve
Supports tubing from
0.187" - 1.625"



Versagrip® Solenoid

Solenoid pinch valve
Supports tubing from
0.063" - 0.375"

Function Fittings and Flow Control Valves



Flow Control Valves

Inline and right-angle flow
controls
Port: 1/8", 1/4", 1/2"
Cv: 0.1 to 3.1



SV/CV Series

Shuttle/check valves
Port: 1/8", 1/4"
Cv: 0.4 to 0.32



QEV

Quick exhaust valve
Port: 1/8", 1/4", 3/8", 3/4", 1"
Cv: 0.10 to 4.40



PBV Series

Bleed valves
Port: 10-32 UNF, 1/8", 1/4"



Needle Valves

Port: 10-32 UNF, 1/8"
Cv: 0.09



Logic Valves

Port: 1/8", 1/4", 1/2"
Function: binary/timers/relay
Cv: 0.12 to 0.75



Stroke Completion Sensors

Send air signal when rod
motion stops
Port: 1/8", 1/4", 3/8", 1/2"

Find out more



Fittings & Accessories



Metal Push-In

Nickel plated brass
Inch - 1/8" to 1/2" O/D tube
Metric - 4 to 12mm O/D tube
Vacuum to 260 psi

Composite Push-In

Composite
Inch - 1/8" to 1/2" O/D tube
Metric - 3 to 16mm O/D tube
Vacuum to 150 psi

Barb Fittings

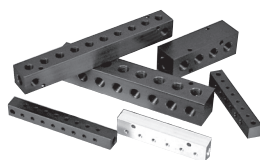
Nickel plated brass
Inch - 1/16" to 3/8" I/D tube

Silencers

Bronze and plastic
10-32 UNF, 1/8", 1/4", 3/8", 1/2"

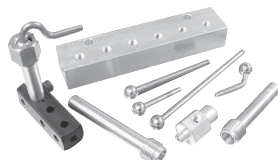
Tubing

Single and multi-bore
polyurethane
1/8", 5/32", 1/4", 5/16", 3/8"



Manifolds

Available in a variety of port sizes, configurations, and materials including aluminum, brass, stainless steel, polypropylene, and nylon materials.



Air Jets

For cooling and blowing
1/32 and 1/16 orifice
Cv: 0.02 to 0.10



online configurators available for cylinders, valves, and FRLs:
bimba.com/en

MFD Series

Actuators



MACQ

Extruded body cylinders,
interchangeable dimensions
12mm - 100mm bores



MTC Series

Extruded thruster with
bronze or ball bushing
12mm - 63mm bores



MHRQ

Double rack and pinion
4 model sizes

Air Preparation



MGAFC

Combination unit
1/8" to 1/2" NPT
Pressure range: 20 to 130 PSI
Temperature range: 23°F to 158°F



MGAFR Series

Filter / regulator
1/8" to 1" NPT
Pressure range: 20 to 130 PSI
Temperature range: 23°F to 158°F



MGAF

Filter
1/8" to 1" NPT
Pressure range: 20 to 145 PSI
Temperature range: 23°F to 158°F



MGAFB

Coalescing filter
1/8" to 1/2" NPT
Pressure range: 20 to 145 PSI
Temperature range: 23°F to 158°F



MGAL

Lubricator
1/8" to 1" NPT
Pressure range: 7 to 145 PSI
Temperature range:
23°F to 158°F



MGAR

Regulator
1/8" to 1" NPT
Pressure range: 7 to 130 PSI
Temperature range: -4°F to 158°F



MSR

Miniature regulator
1/8", 1/4" NPT
Pressure range: 7 to 130 PSI
Temperature range: -4°F to 158°F



MGZ

Pressure relief valve
1/8" to 1/2" NPT
Pressure range: 0 to 130 PSI
Temperature range: -4°F to 158°F



MGV

Soft start / dump valve
1/8" to 1/2" NPT
Pressure range: 36 to 130 PSI
Temperature range: -4°F to 158°F

Grippers



Parallel Grippers with Roller Bearings

Gripper
Pressure range 15-100 PSI
depending on bore size
6, 10, 16, 20, 25, 32, 40 mm bores



Parallel Multi-Finger Grippers

Gripper
Pressure range 22-100 PSI
120 cycles per minute
16, 20, 25, 32, 40, 50, 63 mm bores



Angular Grippers

Gripper
Pressure range 15-100 PSI
depending on bore size
180 cycles per minute
6, 10, 16, 20, 25, 32 mm bores



180° Grippers

Gripper
Pressure range 21-100 PSI
60 cycles per minute
10, 16, 20, 25, 32 mm bores



Valves

**M3V**

Inline solenoid valve
Port: 1/8" NPT
Function: 3/2
Cv: 0.051
Voltage: 12, 24VDC, 24, 120VAC

**M4V**

Inline solenoid valve
Port: 1/8", 1/4", 3/8", 1/2" NPT
Function: 5/2, 5/3
Cv: 0.67-2.79
Voltage: 12, 24VDC, 24, 120VAC

**MPS**

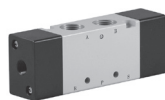
Manifold Powerstrip™
2 to 8 stations for M3V/M4V valves
Voltage: 12, 24VDC, 24, 120VAC
Temperature range: 0°F to 120°F

**M4M**

Inline solenoid valve
Port: 1/4" NPT
Function: 5/2
Cv: 1.40
Voltage: 12, 24VDC, 24, 120VAC

**M4H**

Inline mechanical valve
Port: 1/8", 1/4" NPT
Function: 5/2, 5/3
Cv: 0.67 - 1.39

**M4A**

Inline solenoid and air pilot
Port: 1/8", 1/4" NPT
Function: 5/2, 5/3
Cv: 0.78 - 2.79

**M4L**

Inline mechanical valve
Port: 1/8", 1/4" NPT
Function: 5/2
Cv: 0.78, 1.39

**M4F**

Foot pedal valve
Port: 1/4" NPT
Function: 5/2
Cv: 0.78

**MASC**

Flow control valve
Port: 1/8", 1/4", 3/8", 1/2" NPT



online configurators available for cylinders, valves, and FRLs:
bimba.com/en

IMI Norgren Vacuum Generators



NVP Series

Modular Venturi Generators
Vacuum levels up to 29.5"Hg
Vacuum flows up to 28.0 SCFM



NJ Series

Rugged Cylindrical Generators
Vacuum levels up to 28.0"Hg
Vacuum flows up to 28.0 SCFM



NVDF Series

Variable Flow Vacuum Generators
Vacuum levels up to 25.0"Hg
Vacuum flows up to 120.0 SCFM



NCDF Series

Adjustable Air Amplifier/Blowers
Vacuum levels up to 9.0"Hg
Vacuum flows up to 330.0 SCFM



NDF Series

Material Transfer Generators
Vacuum levels up to 11.0"Hg
Vacuum flows up to 600.0 SCF

IMI Norgren Vacuum Cups



Vacuum Cups

A wide range of styles, materials, and sizes



NCRVT

Fully integrated vacuum tool designed for collaborative robots



Custom Solutions

Custom vacuum end-of-arm tooling designs available



Spring Levelers

Mechanical compensation for uneven surfaces



Mounting Brackets

To connect spring levelers and accessories to extrusions



Manifold Blocks

For mounting vacuum cups to extrusions and/or distributing vacuum to multiple locations

IMI Norgren End-of-Arm-Tooling & Accessories

Warning

Improper selection, misuse, age or malfunction of components used in systems can cause failure in various modes. The system designer is warned to consider the failure modes of all component parts and to provide adequate safeguards to prevent personal injury or damage to equipment or property in the event of such failure modes. System designers and end users are cautioned to consult instruction sheets and specifications available from the factory. The system designer/end user is responsible for verifying that all requirements for the application are met.

Warranty

The products described herein are warranted subject to seller's Standard Terms and Condition of Sale, available at seller's website.

⚠ WARNING: Cancer and Reproductive Harm - www.p65warnings.ca.gov.

Find out more



Our Industrial Automation sector operates four global centers of technical excellence and a sales and service network in 50 countries, as well as manufacturing capability in Europe, Americas and Asia Pacific.

Supported by distributors worldwide.

For further information, scan this QR code or visit:

www.bimba.com/en



Industrial Automation

Our product brands:

IMI Norgren

IMI Bimba

IMI Bahr

The information in this brochure is provided for informational and promotional purposes only and is provided "as is" and without warranties of any kind, whether express or implied, including but not limited to implied warranties of satisfactory quality, fitness for a particular purpose and/ or correctness.

Any specifications, features, pricing, or availability contained in this brochure are subject to change without prior notice. IMI plc does not represent or warrant that the information and/or specification in this brochure are accurate, complete, or current and therefore make no warranties or representation regarding the use of the content. IMI plc or one of its subsidiaries own all images, logos, product brands, and trademarks mentioned in this brochure. Unauthorized use, reproductions, or modification of this content is prohibited.

© Copyright IMI plc. All rights reserved.

